



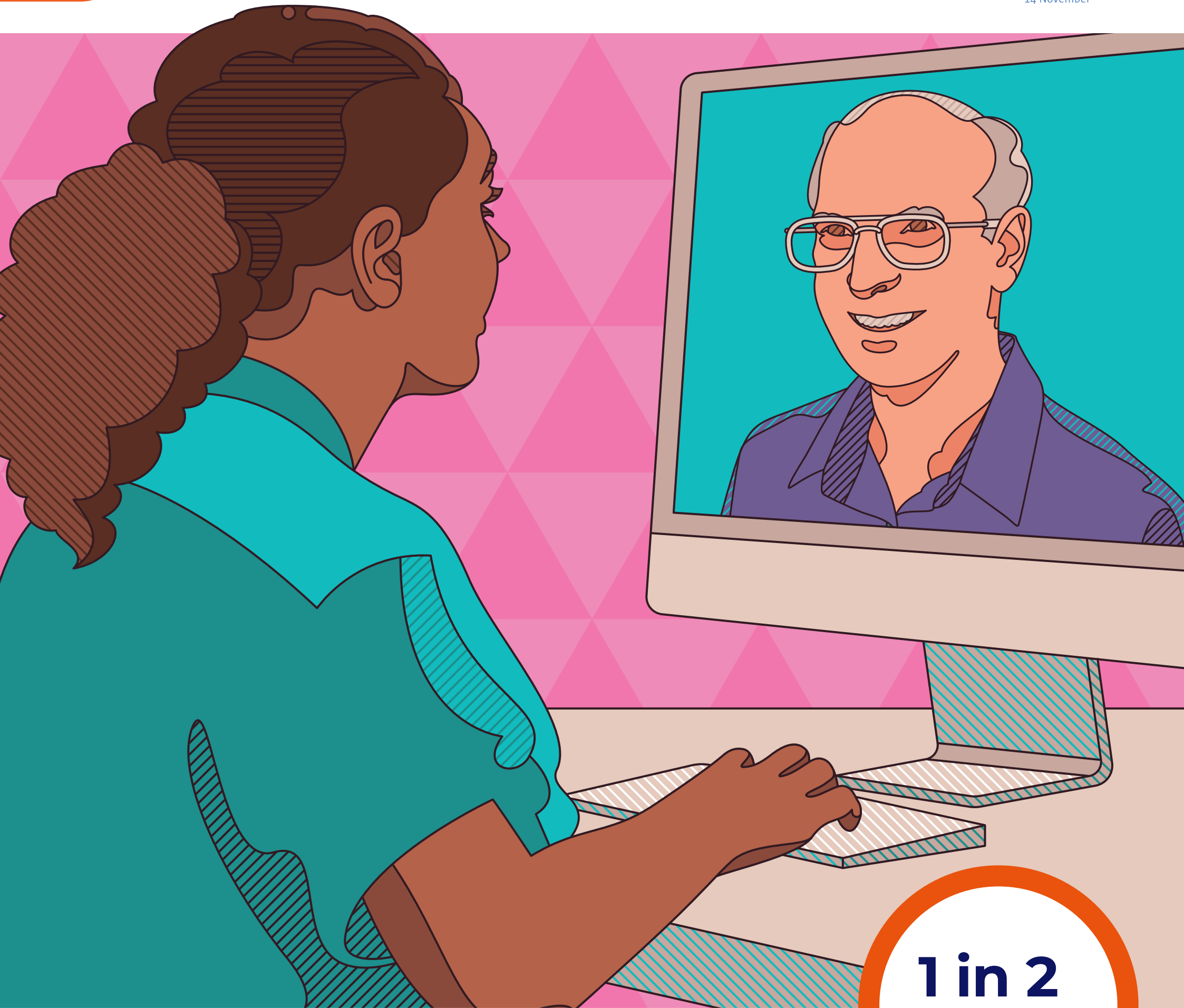
**ACCESS TO EDUCATION
AND PSYCHOLOGICAL SUPPORT**



**International
Diabetes
Federation**



world diabetes day
14 November



1 in 2

people with diabetes
do not have access to
education programmes

People living with diabetes need ongoing education to manage their condition. Many do not have access to diabetes education.

IF NOT NOW, WHEN?

Join our campaign at:

www.worlddiabetesday.org

#IfNotNowWhen