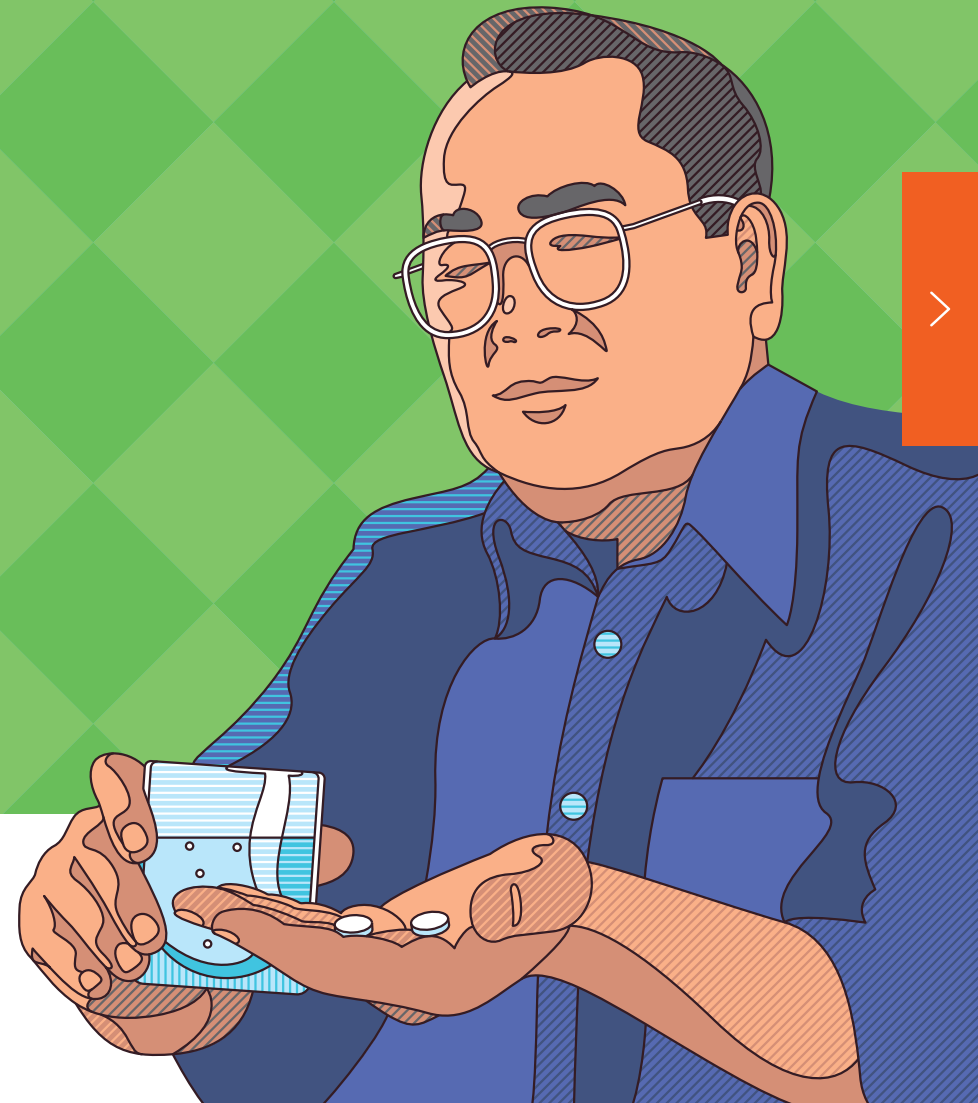




# DIABETES FACTS AND FIGURES



**International  
Diabetes  
Federation**



world diabetes day  
14 November

# DIABETES FACTS AND FIGURES



**50% OF PEOPLE WITH DIABETES ARE UNDIAGNOSED**



**3 IN 4 PEOPLE WITH DIABETES LIVE IN LOW- AND MIDDLE-INCOME COUNTRIES**

## DIABETES

- **463 million adults** (1-in-11) were living with diabetes in 2019.
- The number of people living with diabetes is expected rise to **578 million by 2030**.
- **More than 3 in 4 people** with diabetes live in low and middle-income countries.
- **1 in 6 live births** (20 million) are affected by high blood glucose (hyperglycaemia) in pregnancy.
- **Two-thirds of people** with diabetes live in urban areas and three-quarters are of working age.
- **1 in 5 people** with diabetes (136 million) are above 65 years old.
- Diabetes caused **4.2 million deaths** in 2019.
- Diabetes was responsible for **at least \$760 billion in health expenditure** in 2019 – 10% of the global total spent on healthcare.
- Depending on the global region, **up to 50% people diagnosed with COVID-19** were living with diabetes.
- **1 in 2 adults with diabetes remain undiagnosed** (232 million). The majority have type 2 diabetes.

## ACCESS TO DIABETES CARE

- **Tens of thousands** of people with type 1 diabetes who need insulin to survive and **more than 30 million** with type 2 diabetes who require insulin do not have access to a reliable and affordable supply.
- In Africa, **86% of people with type 2 diabetes** are unable to access the insulin they need.
- **63% of households in low-income countries** are unable to afford insulin, along with 2.8% of households in high-income countries.
- **26.9% of households in low-income countries**, and 0.7% of households in high-income countries, cannot afford the medication Metformin.

**NEW DATA COMING SOON:** The latest global diabetes figures will be released in the 10th edition of the IDF Diabetes Atlas. Look out for the new data in November 2021.